

MACHINE MODEL

H 700

Semiautomatic bandsaw for straight cuts

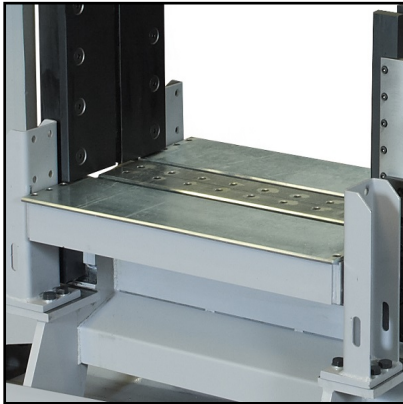
Short description

H700 is the semiautomatic double column bandsaw for straight cut (90°) that provides high working performances with reliable cutting quality and an optimized cutting process thanks to the 10° canted blade, easing the material penetration even on the biggest sizes. The machine is suitable for tubes, pipes, full materials and carpentry works.



Cutting capacity at 90°	Round: 520mm - Square: 450mm - Rectangular: 680x400mm
Cutting capacity at 90° full material	280mm (350mm with 41mm blade)
Bundle cutting capacity	500x400mm
Blade motor	3KW (available also 4KW motor reducer)
Blade speed	15-100 m/min
Blade size	5870x34x1.1mm (available blade h 41mm)
Blade tension	2000kg/cm ²
Band inclination	10°
weight	1900kg
Size	1100x3300x2450mm
Working table height	840mm
Hydraulic unit motor	0.75KW
Hydraulic unit tank capacity	20l

Features



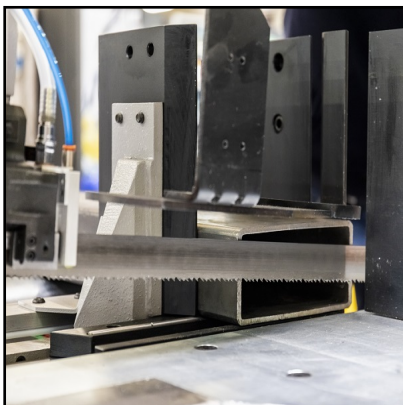
Working table

H series bandsaws are equipped with a wide working table that can fully support the material while approaching to the closing vice, allowing to have a stable and reliable cut.



Rigid sawframe

H 700 saws is electrowelded in steel with rigid tubular section and big thickness to help reduce any vibration while cutting even the largest diameters. The massive structure also avoids binding or slowdowns of the sawing rates.



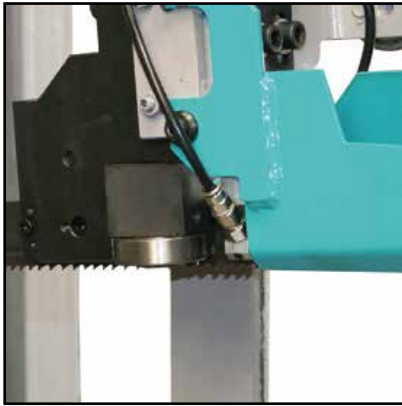
Canted blade

The cutting process is optimized by the 10° canted blade that allows to ease the material penetration, reducing the band strain, helping save blade life and improving cutting performance even on full materials and big diameters and sections.



Blade tensioning

IMET bandsaws have a high blade tension (20000kg/cm² on H 700 model) to increase the machine performance on every kind of material and section.



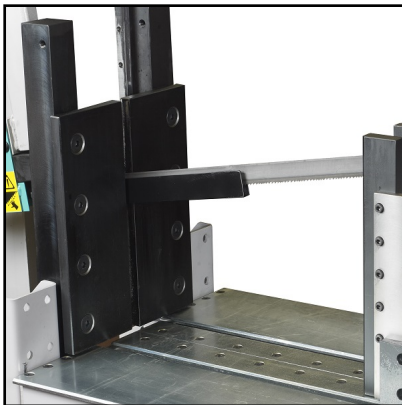
Blade guides

Registrable blade guides in metal pads and bearings. The mobile blade guide is automatically being kept next the cutting area.



Blade cleaning

The machine mounts a motorized cleaning brush with nylon teeth, allowing to remove residuals and remainings in the cutting area and on the blade.



Material detect device

Mechanical material detect device allows to optimize the cutting process by easing the fast approach to the materials, automatically detecting the first cut point and helping regulating the end cut.



Horizontal vice

H 700 has an horizontal hydraulic closing vice to perfectly lock the material.



Panel control

The mobile panel control gives the operator full control on the entire working process and it allows to set and modify all the main operative settings like blade speed and sawframe feeding speed, material penetration. The panel is also equipped with LCD control light.



High performances (Optional)

OPTIONAL

To increase machine performances it's possible to apply the 4KW motor reducer for 41mm height blade with hydraulic tensioning.



Minimal lubrication system (Optional)

OPTIONAL

It is possible to require, for all Imet machines, the minimal lubrication system , it avoids the dispersion of refrigerant liquid typical in the use of emulsifiable oil, the life of the blade is not in any way affected.



Blade deviation (Optional)

OPTIONAL

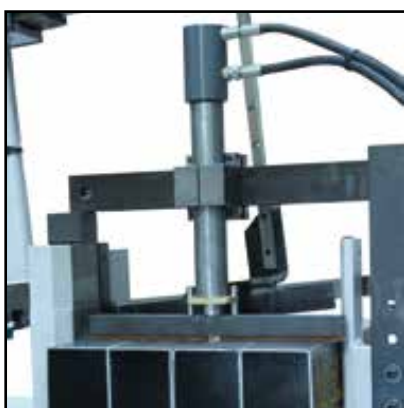
Blade deviation control



Laser ray (Optional)

OPTIONAL

it's available a laser ray to optimize cutting process by pointing the cutting line.



Bundle cutting device (Optional)

OPTIONAL

Hydraulic bundle cutting device with maximum capacity of 500x400mm, minimum 50x50mm.



Loading/unloading roller table (Optional)

OPTIONAL

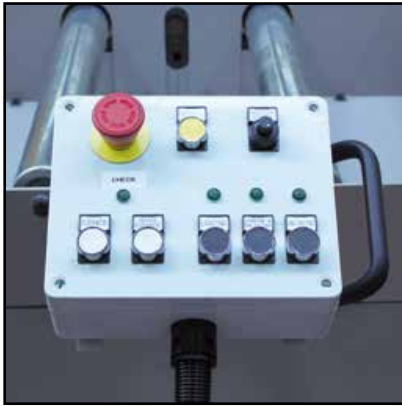
Loading and unloading roller table with free rolls. Single module 2m with 2 containment vertical rolls on one side.



Roller table preset for motorization (Optional)

OPTIONAL

Roller table preset for motorization with chain transmission and pignons. The element price is to be intended for a single metre.



Motorization system (Optional)

OPTIONAL

Motorization system for motorized roller table. Recommended every 6m in length.
Max speed 10m/min



Motorized length stop with CNC (Optional)

OPTIONAL

CNC motorized measurement length stop with fast approaching and automatic slowdown of the piece. To be ordered together with RTR motorized roller table. - RR6S measurement length 6m -RR9S measurement length 9m -RR12S measurement length 12m



Pair of vertical rolls (Optional)

OPTIONAL

Pair of vertical containment rolls made in steel. Max 2 pairs every 1.5m.